



Outreach Inc.

BUILDING COMMUNITY
BY
BUILDING COMMUNITIES

Volume 2, Issue 2

2007 PROGRESS:

- 9 NEW HOMES. All Earthcraft houses, offering affordable/energy efficient alternatives to low income families and communities
- 10 major home renovations in the inner city of Birmingham, AL
- 17 Repairs for elderly inner city residents

Inside this issue:

- Rusted pipes 1,2
- Helmet of Hope 1
- Foundations on Super Rock—Block
- Never Let it Get You Down
- Twin Construction & Mission Birmingham
- Affordable, NOT Cheap

Rusted Pipes, Ms. Cooley and Community

*A*ffordable Housing is a term like Xerox or Kleenex that is a part of our consciousness. What we have experienced through our work as an affordable housing builder and developer in Birmingham is that it is a terrible problem in our community and in our society, but it flies below our radar of public concern. Some statistics bear out our concern: *A worker earning minimum wage of \$5.15 would have to work 79 hours per week to afford "fair market rent" of \$527 for a two-bedroom apartment --as determined by HUD. A worker earning \$9.14--the average wage for Alabama--would have to work 44 hours a week for 52 weeks to afford that same two-bedroom apartment.* What happens when a family pays more than 1/3 of their monthly income for housing? Other monthly budget items like food, clothing and medical care are cut.

That is why we are passionate about affordable housing. We have seen and continue to see on a daily basis the need for well-designed and built homes and communities. We have repaired, rebuilt and built over 350 homes in and around Birmingham. And we're really just getting started "Building community by building communities."



Continued on page 2

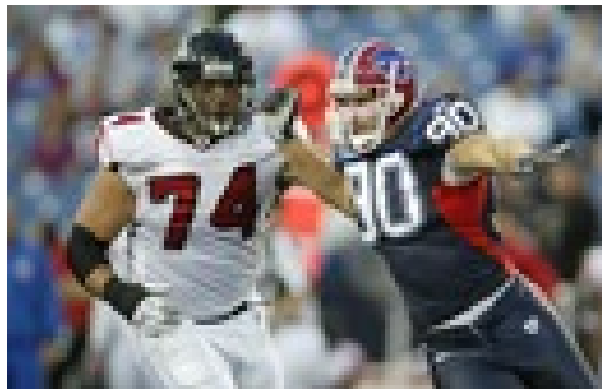


Helmet of Hope:

Two years ago I had the privilege to meet a great NFL athlete. Todd Weiner is the starting right tackle for the Atlanta Falcons and a 10 year veteran of the NFL. For Todd and his amazing family, the NFL has offered more than a career and fame, more importantly it has provided a venue to share their testimony of how Christ transformed their lives.

Todd and Sunny have a heart for the inner city and the call to love those in need. Generously, Todd recently gave his 2006 season helmet, signed by the Falcons team, to Outreach Incorporated to be auctioned and help raise money to support our work. Now, a helmet is helping us bring hope to the inner city!

By Chris Reebals— Development Director



Rusted Pipes... continued from page 1

September 2007

...Statistics are good and numbers help us quantify the needs. However, **people** are the reason we are here. I want to leave you with a story of hope and perspective. Hope you helped us bring and perspective on how much our collective efforts are needed. Ms Cooley was in need. Ms. Cooley owns her home. She has lived in her house for decades and raised her family there. Recently she had to move out because the 50+ year old pipes in her home had rusted through. After going 6 weeks borrowing water and restroom facilities from neighbors she had to move out. Outreach was able to replace her water lines and ensure that her house was once again a place she can call home. Because of your continued support of Outreach Incorporated, we served our neighbor in need and blessed our community with the call of our lives and ministry. For your continued support, I am humbly grateful.

By Frank Dominick — Executive Director



Foundations on Super Rock—Block

past two years Super Rock Block has donated over 12,000 concrete block products to Outreach, Incorporated. Allowing us to build a foundation of hope on a "Rock" of generosity. We could not survive, much less carry out our ministry in the community without the overwhelming kindness and support of Super Rock Block and Lehigh Cement.

How can we possibly build these amazing houses and provide them as "affordable"? A daunting task that starts with the need of a strong foundation. In comes Super Rock and Susan Colvin. Super Rock Block, a division of Lehigh Cement, has been a faithful and amazing source of help and hope for our work and service. Over the past two years, every time we have embarked on a development, Susan Colvin has been called on and without fail has come through; "Let me see what I can do and I'll get back with you". Usually by the end of the day we have an answer; "We can get you 4000 4x12 inch blocks to help with your project". In the

By Chris Reebals—Development Director

Never Let It Get You Down:

A couple of weeks ago several new air conditioning units were stolen. “Why...” is always the question that ensues. And then comes the “How are we going to pay for it...”. Well, for 14 years God has been Faithful to provide and we trust that He will continue to do so despite all efforts to thwart our progress. We will not give up. I am reminded of the promises to provide “exceeding and abundant beyond all that we could ask or think”. I for one am blessed by the unrelenting passion and drive of our Executive Director, Frank Dominick and our board; specifically Wayne Hoar, as he donates time every week to our office and accounting work. The bible tells us to “not grow weary in doing good... for in due time we will reap if we do not lose heart”! So we serve despite the frustrations of theft and budget constraints and we find joy in the smile of those we serve. Ms. Thomas’ smile and words of encouragement — “You all have been the greatest blessing to me and my family...” — remind us of the value in service and the joy of blessing others!

By Chris Reebals—Development Director

December 2007



TWIN CONSTRUCTION & MISSION BIRMINGHAM:

In building 23 new homes in the Rising West Princeton and Arlington-West End communities, Outreach has helped to raise the appraisal value from \$65,000 to \$95,000. These homes were built for families in the “low to moderate income” range. The qualifying families are many, however our experience in the inner city has taught us that “strategic” families who have a heart for the community is critical to neighborhood revitalization.

One such family, the Gaither’s, moved into their home In January of 2007. When funds were not available to build a home for this wonderful family, two generous partners stepped in; Twin Construction and Mission Birmingham. Twin Construction is a local building and remodeling firm run by twin brothers David and William Seegal.

Twin Construction saw the need and wanted to do more than just contribute money; enlisting subcontractors, suppliers, staff, time and money, the Gaither’s home is now a reality!

Tracy Higgs with Mission Birmingham served as the catalyst by connecting Outreach, the Gaithers and Twin Construction. Twin construction funded the construction and managed the job from framing to completion. Tracy Higgs facilitated the process and helped the Gaithers throughout the home buying process.

For over 14 years we have said that at Outreach, “We Build community by building communities”; West End, as one of those communities, will be changed forever because of families like the Gaithers, contractors like Twin and servants like Tracy Higgs. Our work at Outreach would not be possible without the generosity and excellence of partners like Mission Birmingham and Twin Construction.

By Frank Dominick—Executive Director



Outreach Incorporated
118 55th Street North
Birmingham, AL 35212

U.S. Postage
Paid
Birmingham, AL
Permit # 1585

Thank You For Your Continued Support!



Please prayerfully consider contributing to our work this year! Your generous contributions will help us serve those in need.

Please mail your contributions to:

**Outreach Incorporated
118 55th St. N.
Birmingham, AL 35212**

AFFORDABLE, NOT CHEAP!

12 Students from Briarwood Presbyterian Church's youth group decided they would take some time from their summer vacation to serve those in need. Because of their generous gift of time and service and the contributions of our partners over the years, we have been able to provide affordable housing that uplifts the surrounding communities.



Outreach has provided homes that speak to the value of integrity and self worth. Others have said, "Give them a cheap house"... We will NOT! We will provide the highest energy ratings, the best materials and craftsmanship and, with the help of donations, service teams, and your support, we WILL transform communities, families and lives one at a time!

Outreach incorporated is a 501 (c) 3 non-profit organization and all donations are tax deductible to the full extent of the law.

WWW.INOUTREACH.ORG